

## Windshield bracket 3 piece set

Reproduction 3 piece sand cast bronze bracket sets.  
You buff and chrome.



### DEL

1947-54 Racing Runabout  
1947-52 Special Runabout  
1949-54 16/18' Sportsman  
1951-55 17' Sportsman  
1953-54 Deluxe/Rocket  
1954-55 20' Sportsman

### PRE

1934-35 16/18' Runabouts  
1936-38 19' Custom Rnbt  
1941 17' Special Runabout  
1939 17' Sportsman  
1938 15 1/2 Deluxe Rnbt  
1938 15 1/2 Sportsman



### RIV

All Rivieras and 1946-50 17' Deluxe Runabout

**RIV** [Riviera] windshield bracket set \$450

**DEL or PRE** windshield bracket set \$399

## Windshield rubber and windshield gasket

Black or white windshield rubber for the lower edge of windshield.



**WSRUBBER** Black Windshield rubber per foot \$4

**WSRUBBERW** White Windshield rubber per foot \$5

**WSGASKET** Windshield gasket per foot \$2

Black gasket for lining windshield end brackets. Wet gasket with water and dish soap before inserting glass. Trim excess material with razor after installing glass.

### Dealer Prices

**WSRUBDLR** 30 feet Black Windshield Rubber \$100

**WSGDLR** 100 feet Windshield Gasket \$150

## Chris Craft

### Step pads, Step Frames and Step Wedges

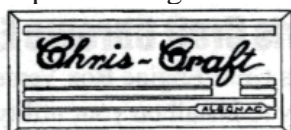
**SBC** Black Chris Craft 2 1/2 x 7 1/2 [1954 on] \$16

**SWR** White Ribbed 2 1/2 x 7 3/4 [1931-54] \$16

**SBR** Black Ribbed 2 1/2 x 7 3/4 [1931-54] \$16

**SWC** White Chris Craft 2 1/2 x 7 1/2 [1954 on] \$16

**LBCPRE** 4 7/8 x 10 3/4 Black pre war Algonac Call



**STEPFRAME** Chromed frame for small pads \$154

**STEPFRAMES** Stainless frame for small pads \$70

**STEPFRAMEML** Stainless frame for large pads \$85

**STEPWEDGE** Wood wedge for behind steppads \$16

## Gas Caps

Chrome plated gas cap with knurled edge, internal threads, and chain and anchor. For a 2" filler tube



**CAPFUEL** "FUEL" imprint, \$159

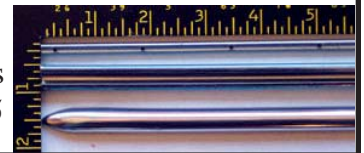
**CAPPLAIN** without imprint, \$145

**CAPCHAIN** Chain and Anchor Only \$8.95

## Continental & Capri 2 Part Side Trim

Chris Craft side trim used on Continentals, Capris, 24' Sportsman, 23' and 24' Holidays, Ski Boats, and other Chris boats.

**2PARTTRIM** 2 Part Chris side trim-4 foot piece \$125



## Black Alligator Vinyl

Alligator vinyl was used in 1955-56 Continentals, 1955-58 Capris, and all Cobras and some Holidays. Rolls are 54 inches wide.

**GATOR** Alligator vinyl 54 inch roll, per foot \$9

## Push-Pull Switch

Chrome plated brass knob, gasket sealed case for 6-36 volt DC systems.



Fits dash panels up to 3/4 inch.

**SWPUSH** Chrome plated push-pull switch \$16.95

## Plastic CCC Arrows



The arrows look just like originals and have the fastener holes in the same places. The 33 1/2" are gold and the 44 1/2" are silver.

**CCC33P** 33 1/2 inch Port \$125

**CCC33S** 33 1/2 inch Starboard \$125

**CCC44P** 44 1/2 inch Port \$140

**CCC44S** 44 1/2 inch Starboard \$140

## Classic Style Cloth Wrapped Wire

Modern rubber insulation with classic cloth wrap, per foot.

**WIRE8** 8 gauge yellow \$2

**WIRE10** 10 gauge yellow/green \$2

**WIRE12** 12 gauge yellow/black \$2

**WIRE14RY** 14 gauge red/yellow \$2

**WIRE14RB** 14 gauge red/black \$2

**WIRE16** 16 gauge black/yellow \$2

### Bronze Insulated Staples

**WSTAPLE58** 1/4 x 5/8" box of 50 staples \$7

**WSTAPLE34** 1/2 x 3/4" box of 40 staples \$7

**Cleaning out the garage and you have reached the shelf in the back full of old boat parts you will never use? Give us a call with what you have to sell. We either trade or pay cash for many old boat parts.**