

Windshield bracket 3 piece set

Reproduction 3 piece sand cast bronze bracket sets. You buff and chrome.



DEL \$475

1947-54 Racing Runabout
1947-52 Special Runabout
1949-54 16/18' Sportsman
1951-55 17' Sportsman
1953-54 Deluxe/Rocket
1954-55 20' Sportsman

PRE \$475

1934-35 16/18' Runabouts
1936-38 19' Custom Rnbt
1941 17' Special Runabout
1939 17' Sportsman
1938 15 1/2 Deluxe Rnbt
1938 15 1/2 Sportsman



RIV \$499

All Rivas and 1946-50 17' Deluxe Runabout

RIV [Riviera] windshield bracket set \$499

DEL or PRE windshield bracket set \$475

Windshield rubber and windshield gasket

Black or white windshield rubber for the lower edge of windshield.



WSRUBBER Black Windshield rubber per foot \$6

WSRUBBERW White Windshield rubber per foot \$7

WSGASKET Windshield gasket per foot \$4

Black gasket for lining windshield end brackets. Wet gasket with water and dish soap before inserting glass. Trim excess material with razor after installing glass.

Dealer Prices

WSRUBDLR 30 feet Black Windshield Rubber \$130

WSGDLR 100 feet Windshield Gasket \$180

Chris Craft

Step pads, Step Frames and Step Wedges

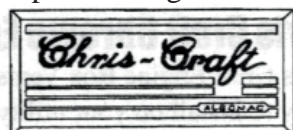
SBC Black Chris Craft 2 1/2 x 7 1/2 [1954 on] \$16

SWR White Ribbed 2 1/2 x 7 3/4 [1931-54] \$16

SBR Black Ribbed 2 1/2 x 7 3/4 [1931-54] \$16

SWC White Chris Craft 2 1/2 x 7 1/2 [1954 on] \$16

LBCPRE 4 7/8 x 10 3/4 Black pre war Algonac \$25



STEPFRAMES Stainless frame for small pads \$70

STEPFRAMEML Stainless frame for large pads \$85

STEPWEDGE Wood wedge for behind steppads \$16

Gas Caps

Chrome plated gas cap with knurled edge, internal threads, and chain and anchor. For a 2" filler tube



CAPFUEL "FUEL" imprint, \$159

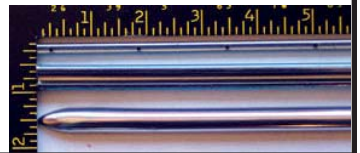
CAPPLAIN without imprint, \$149

CAPCHAIN Chain and Anchor Only \$9.95

Continental & Capri 2 Part Side Trim

Chris Craft side trim used on Continentals, Capris, 24' Sportsman, 23' and 24' Holidays, Ski Boats, and other Chris boats.

2PARTTRIM 2 Part Chris side trim-4 foot piece \$125



Black Alligator Vinyl

Alligator vinyl was used in 1955-56 Continentals, 1955-58 Capris, and all Cobras and some Holidays. Rolls are 54 inches wide.

GATOR Alligator vinyl 54 inch roll, per foot \$9

Push-Pull Switch

Chrome plated brass knob, gasket sealed case for 6-36 volt DC systems.



Fits dash panels up to 3/4 inch.

SWPUSH Chrome plated push-pull switch \$25

Plastic CCC Arrows



The arrows look just like originals and have the fastener holes in the same places. The 33 1/2" are gold and the 44 1/2" are silver.

CCC33P 33 1/2 inch Port \$129

CCC33S 33 1/2 inch Starboard \$129

CCC44P 44 1/2 inch Port \$140

CCC44S 44 1/2 inch Starboard \$140

Classic Style Cloth Wrapped Wire

Modern rubber insulation with classic cloth wrap, per foot.

WIRE8 8 gauge yellow \$2

WIRE10 10 gauge yellow/green \$2

WIRE12 12 gauge yellow/black \$2

WIRE14RY 14 gauge red/yellow \$2

WIRE14RB 14 gauge red/black \$2

WIRE16 16 gauge black/yellow \$2

Bronze Insulated Staples

WSTAPLE58 1/4 x 5/8" box of 50 staples \$7

Cleaning out the garage and you have reached the shelf in the back full of old boat parts you will never use? Give us a call with what you have to sell. We either trade or pay cash for many old boat parts.